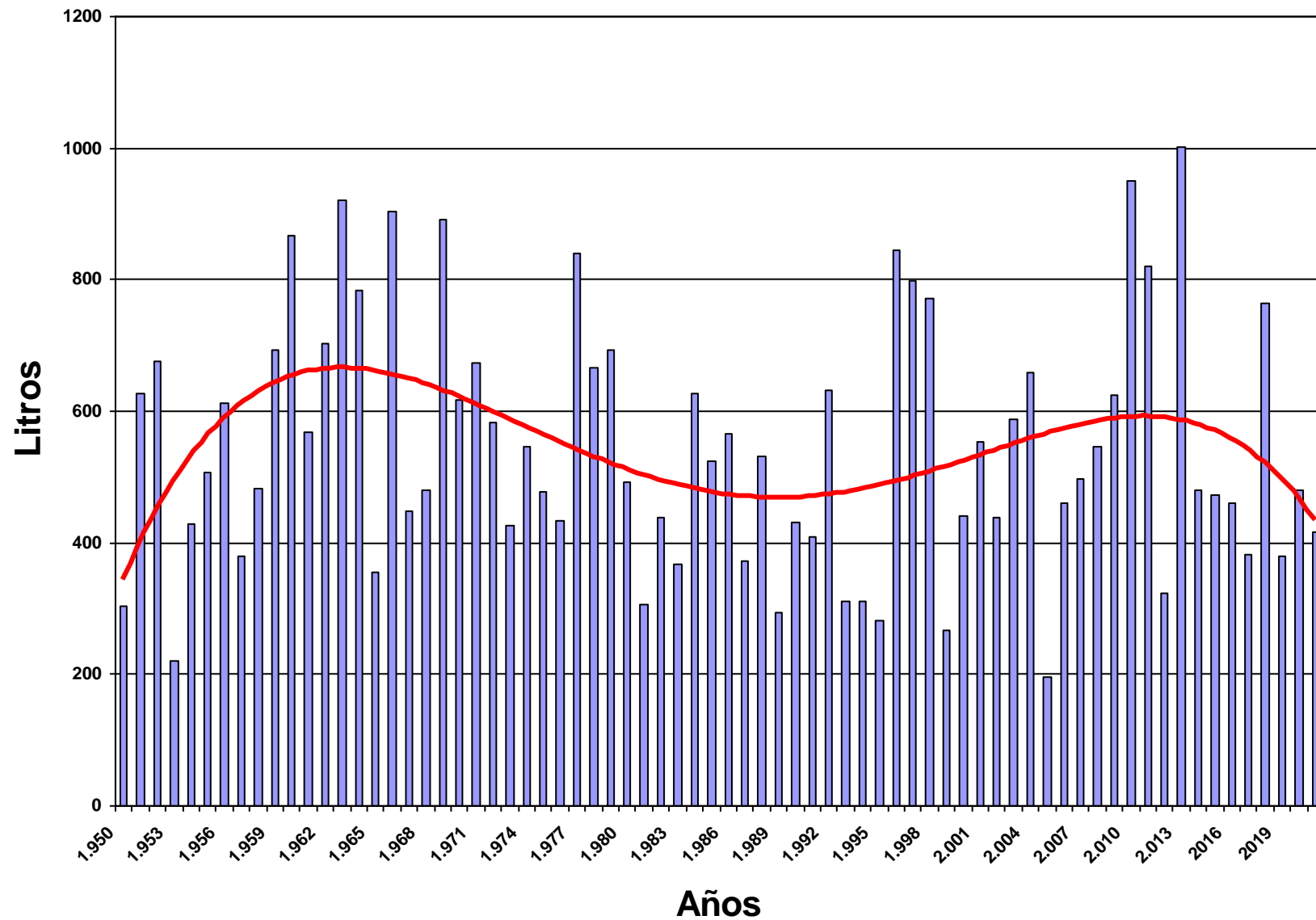
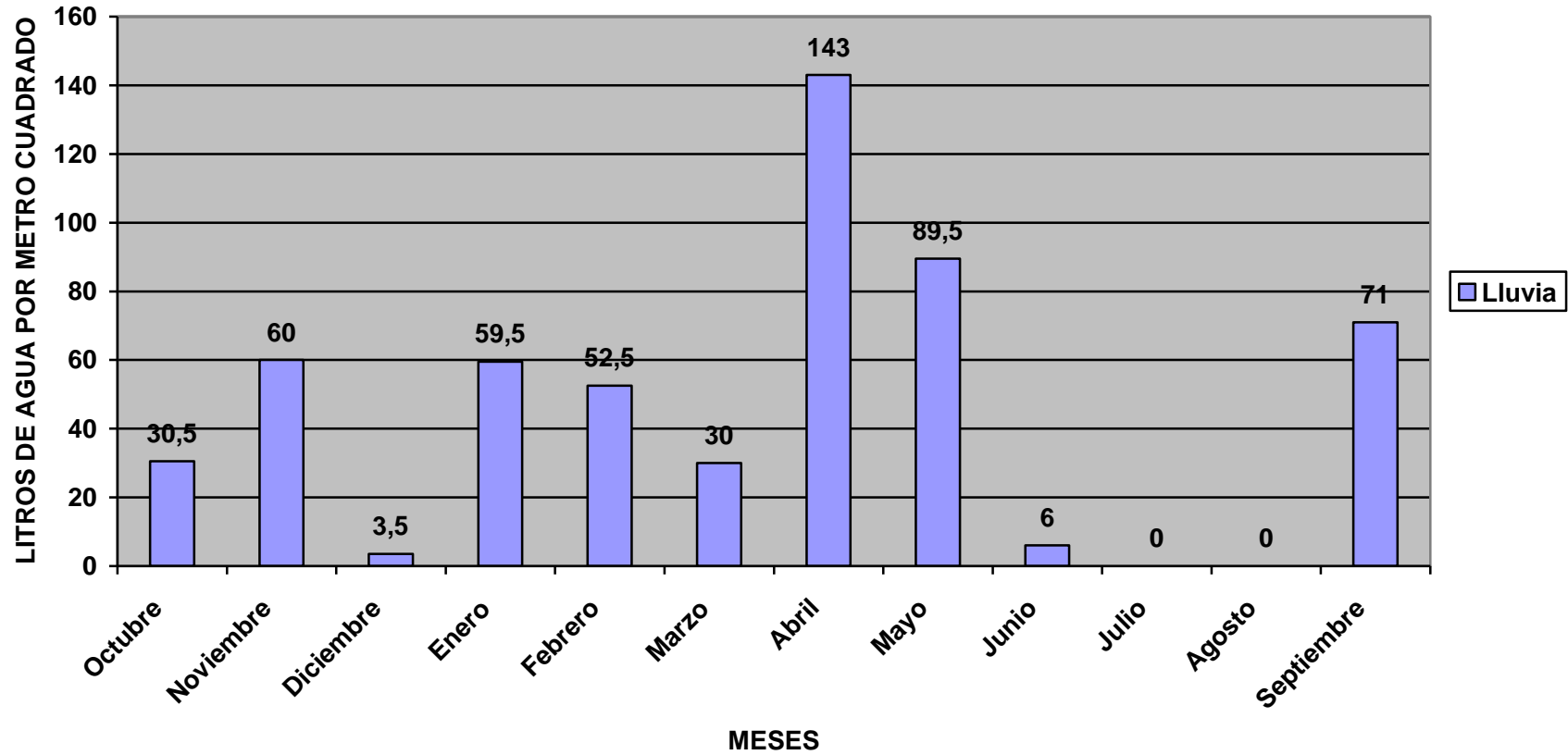


## Lluvia en Úbeda y Baeza desde 1.950



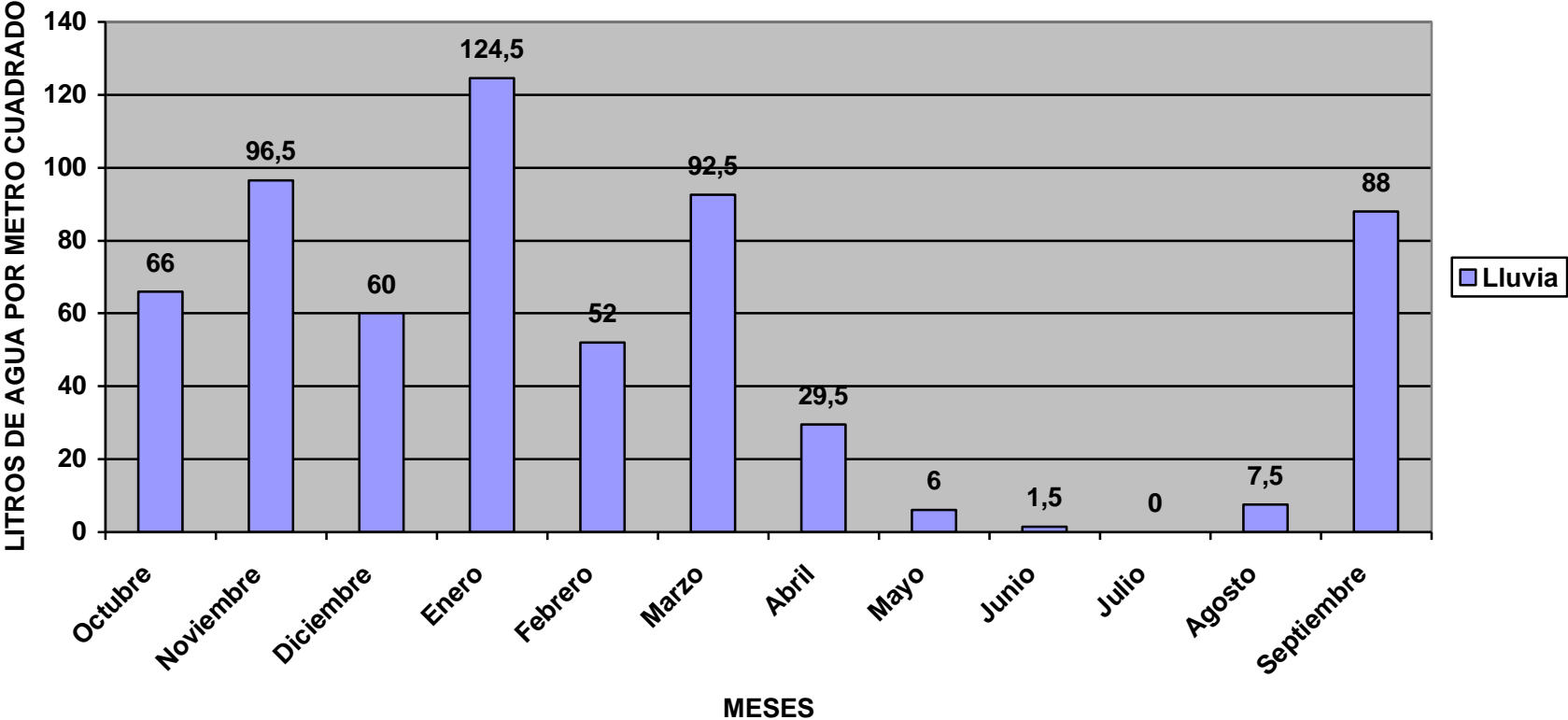
# AÑO AGRÍCOLA 2.008

545,5 litros



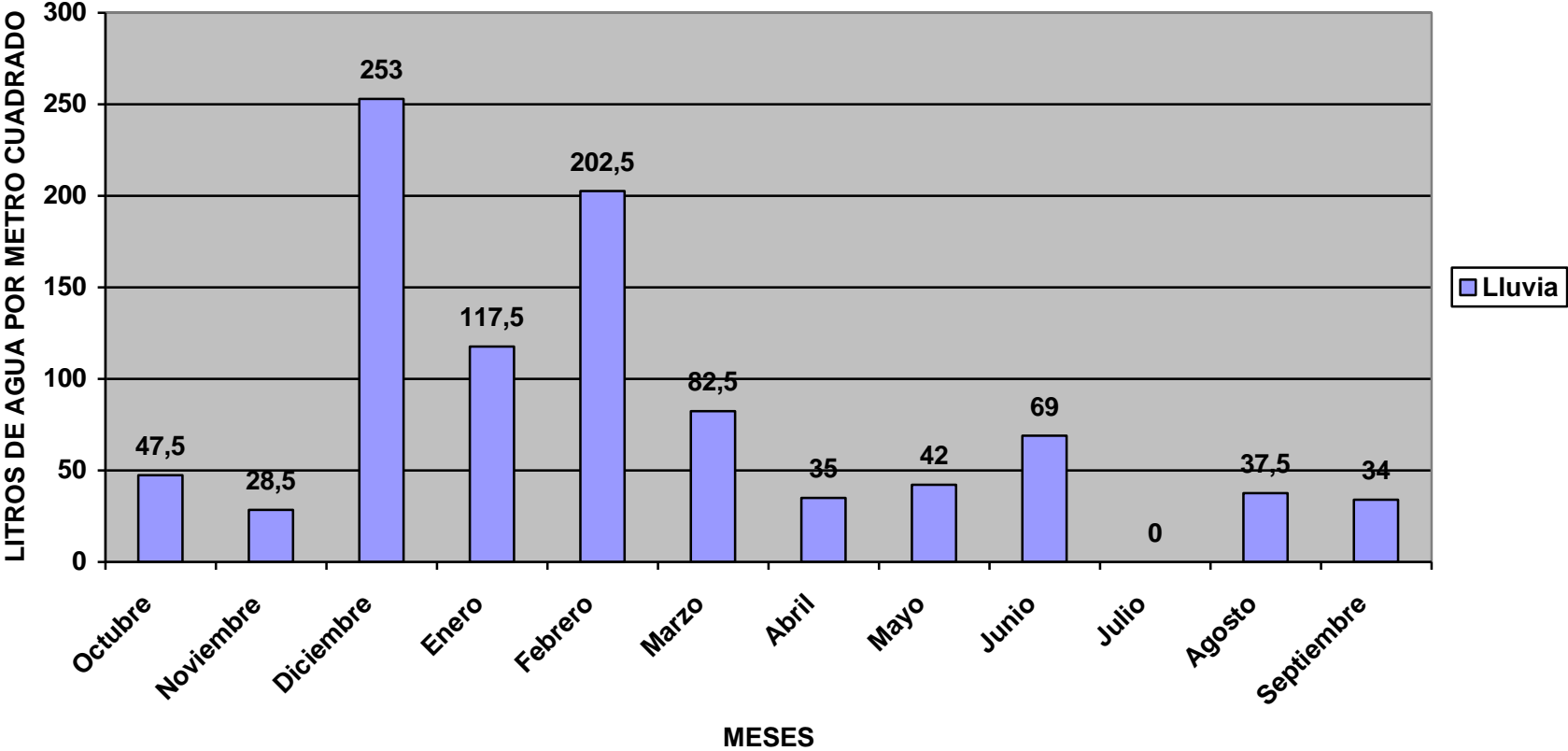
**AÑO AGRÍCOLA 2.009**

624 litros



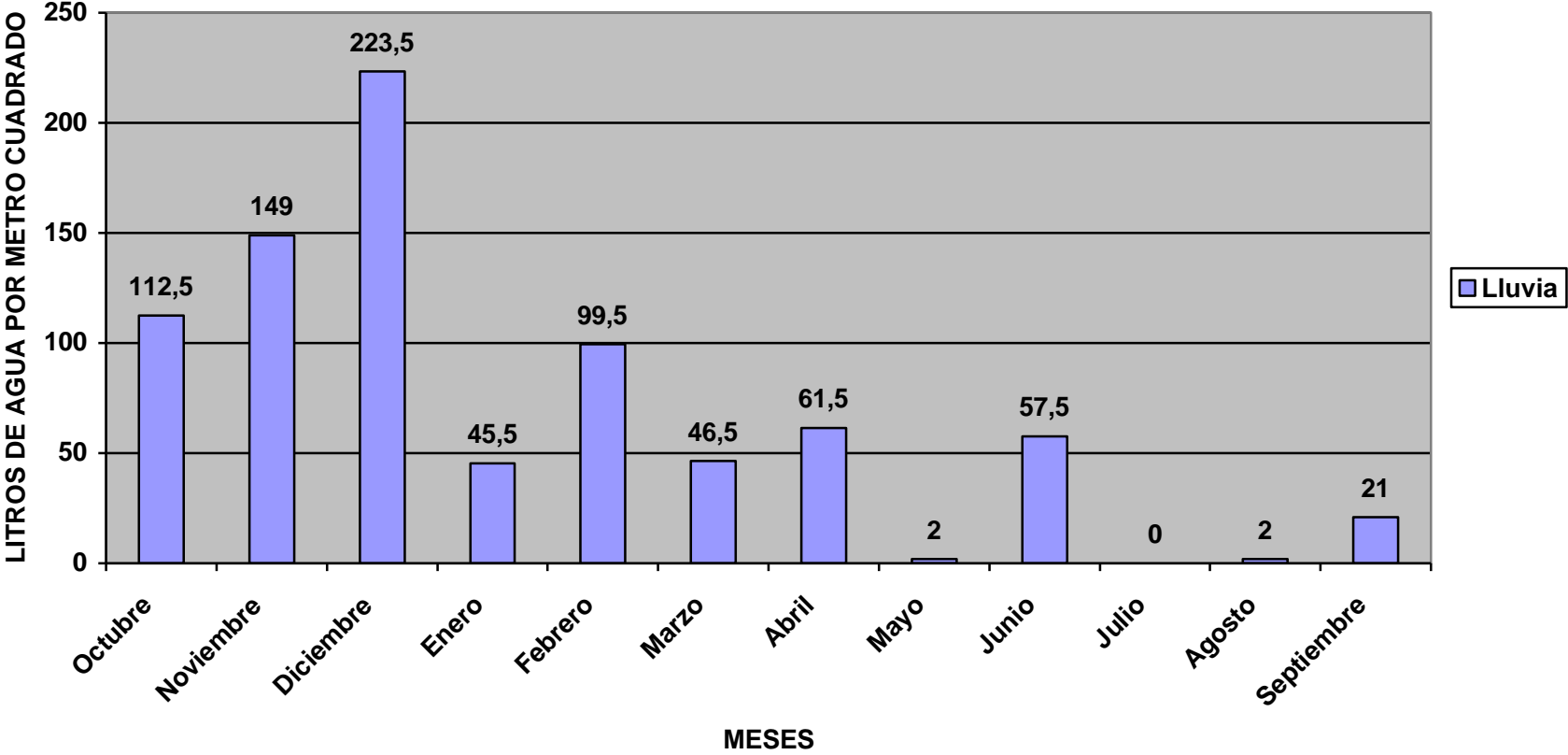
**AÑO AGRÍCOLA 2.010**

949 litros



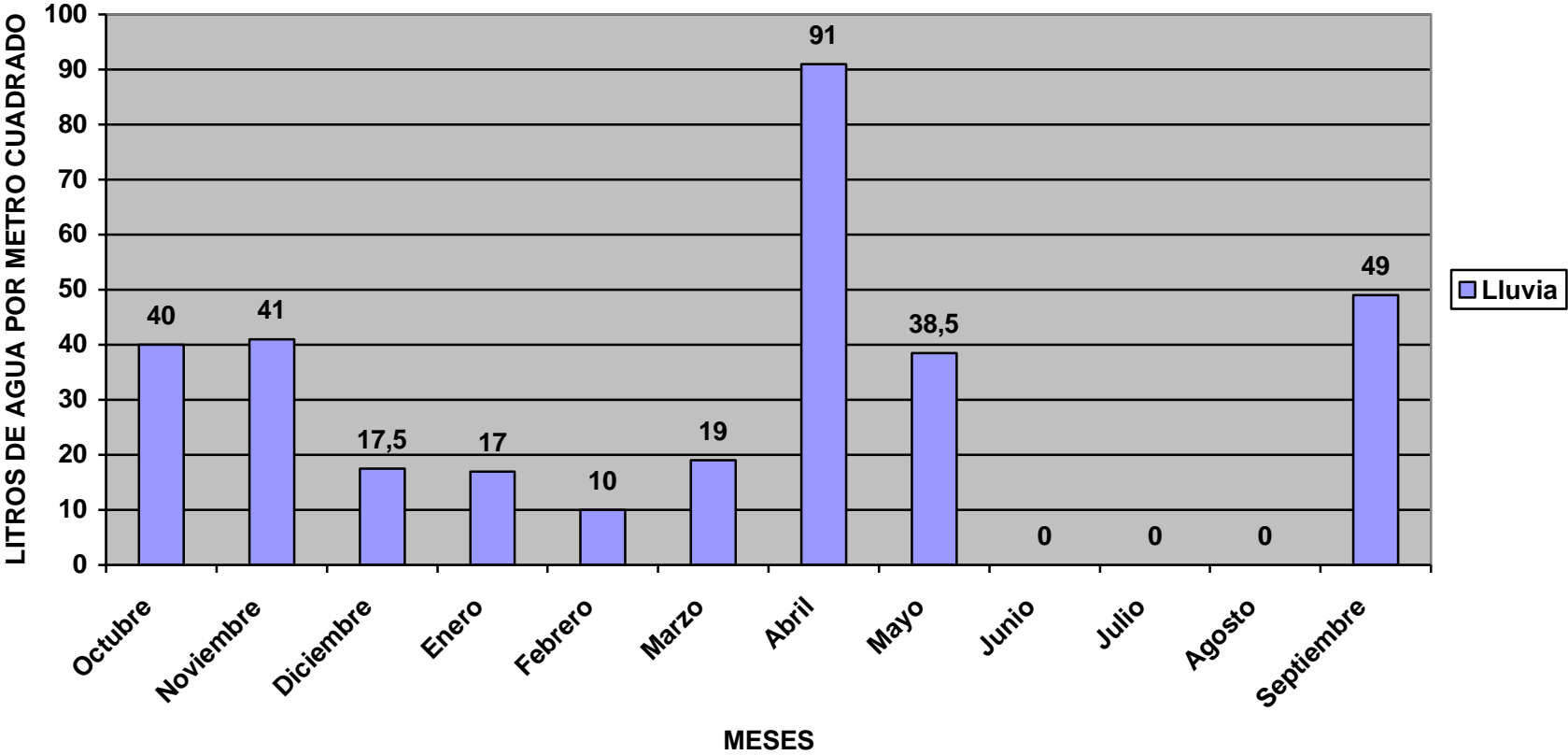
**AÑO AGRÍCOLA 2.011**

820,5 litros



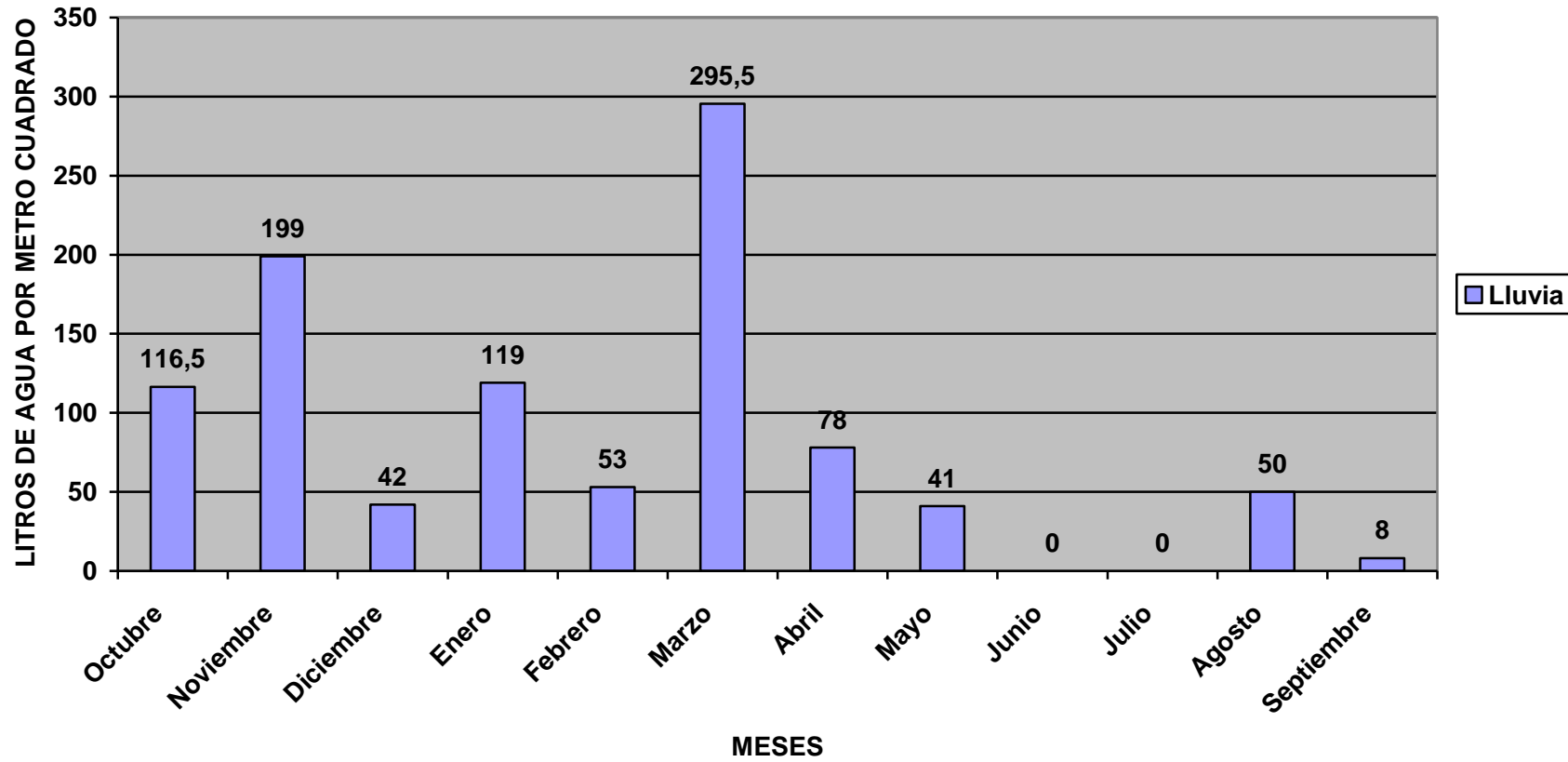
**AÑO AGRÍCOLA 2.012**

323 litros



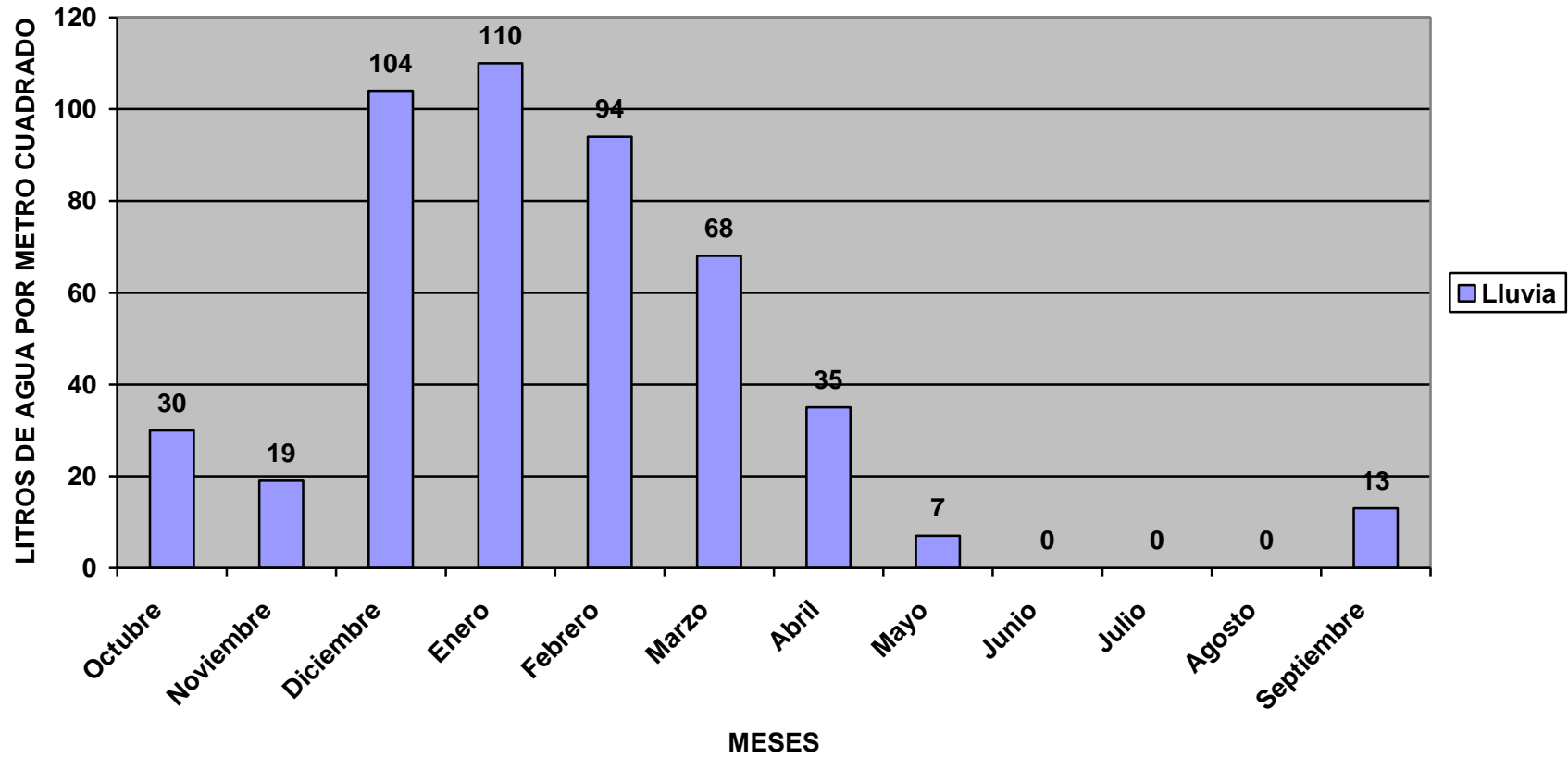
# AÑO AGRÍCOLA 2.013

1.002 litros



# AÑO AGRÍCOLA 2.014

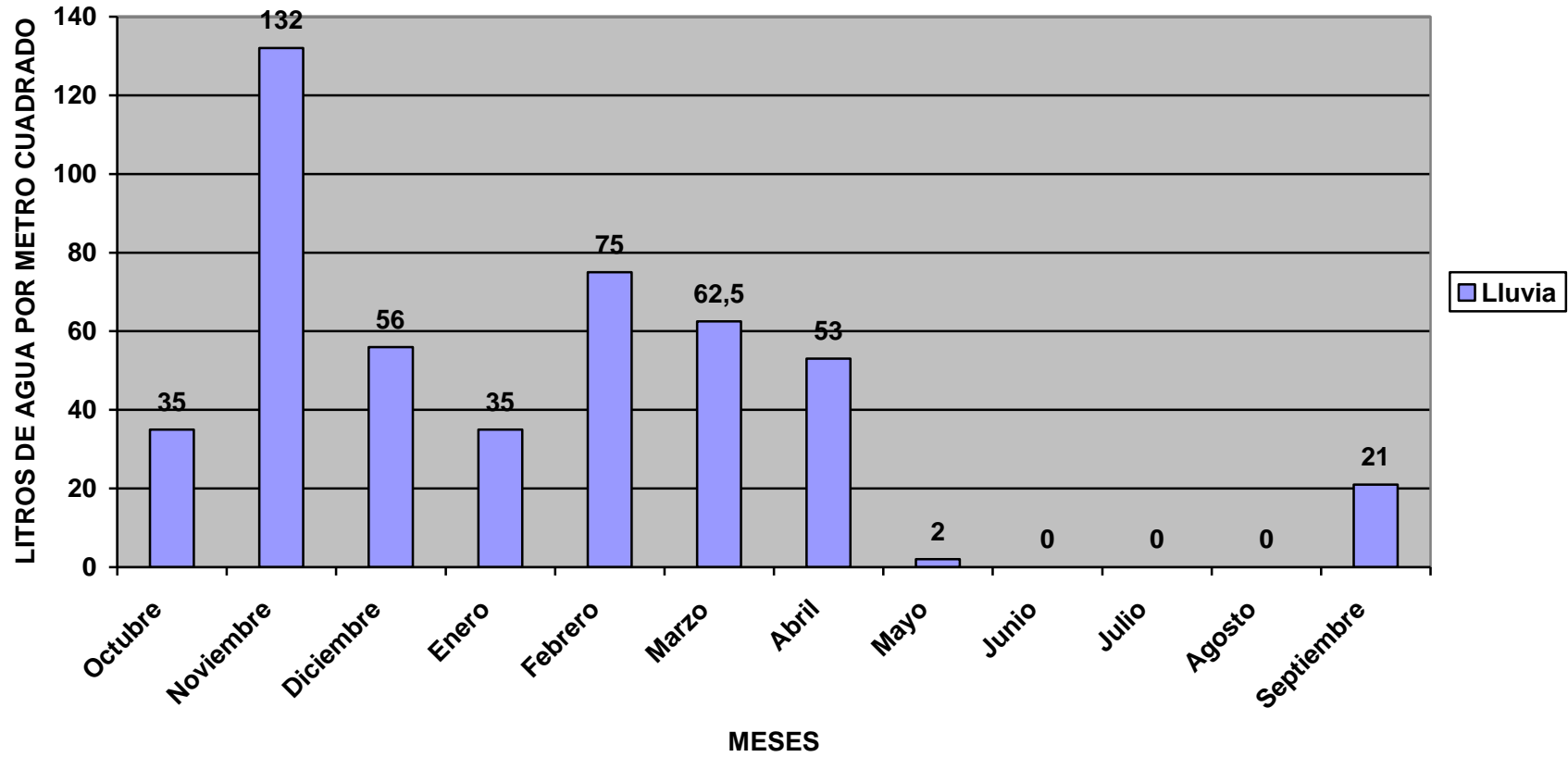
480 litros





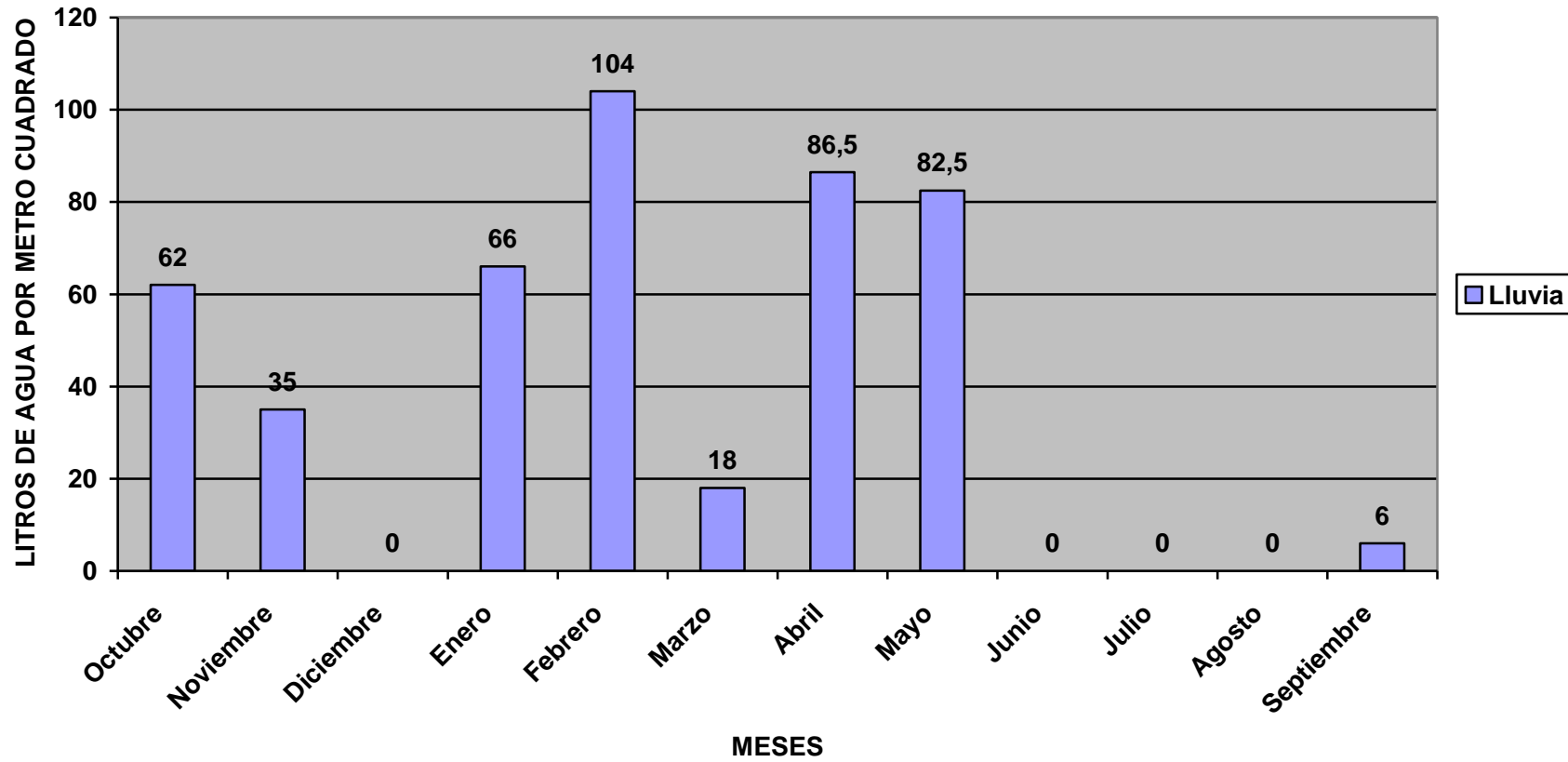
# AÑO AGRÍCOLA 2.015

471,5 litros



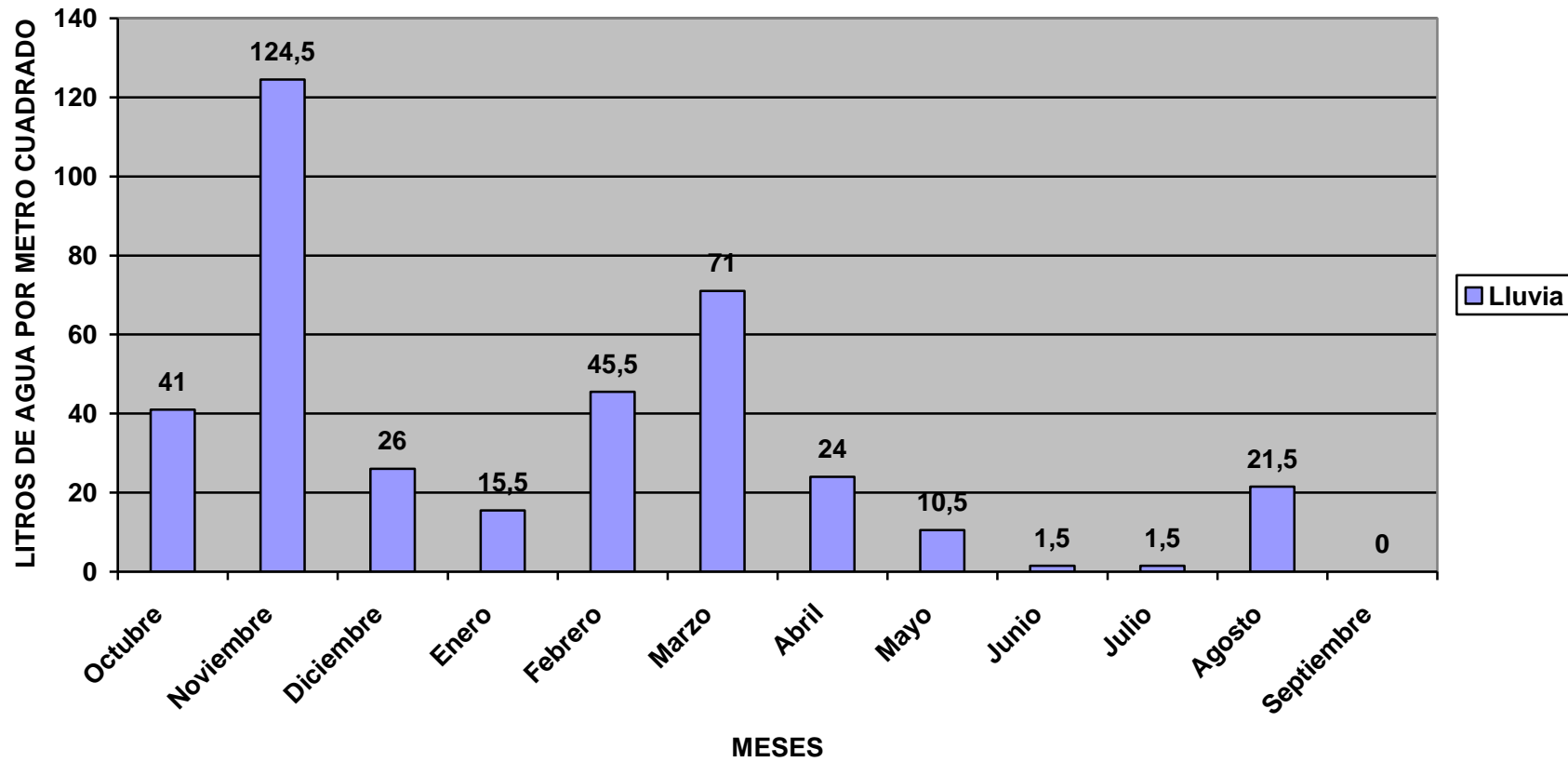
# AÑO AGRÍCOLA 2.016

460 litros



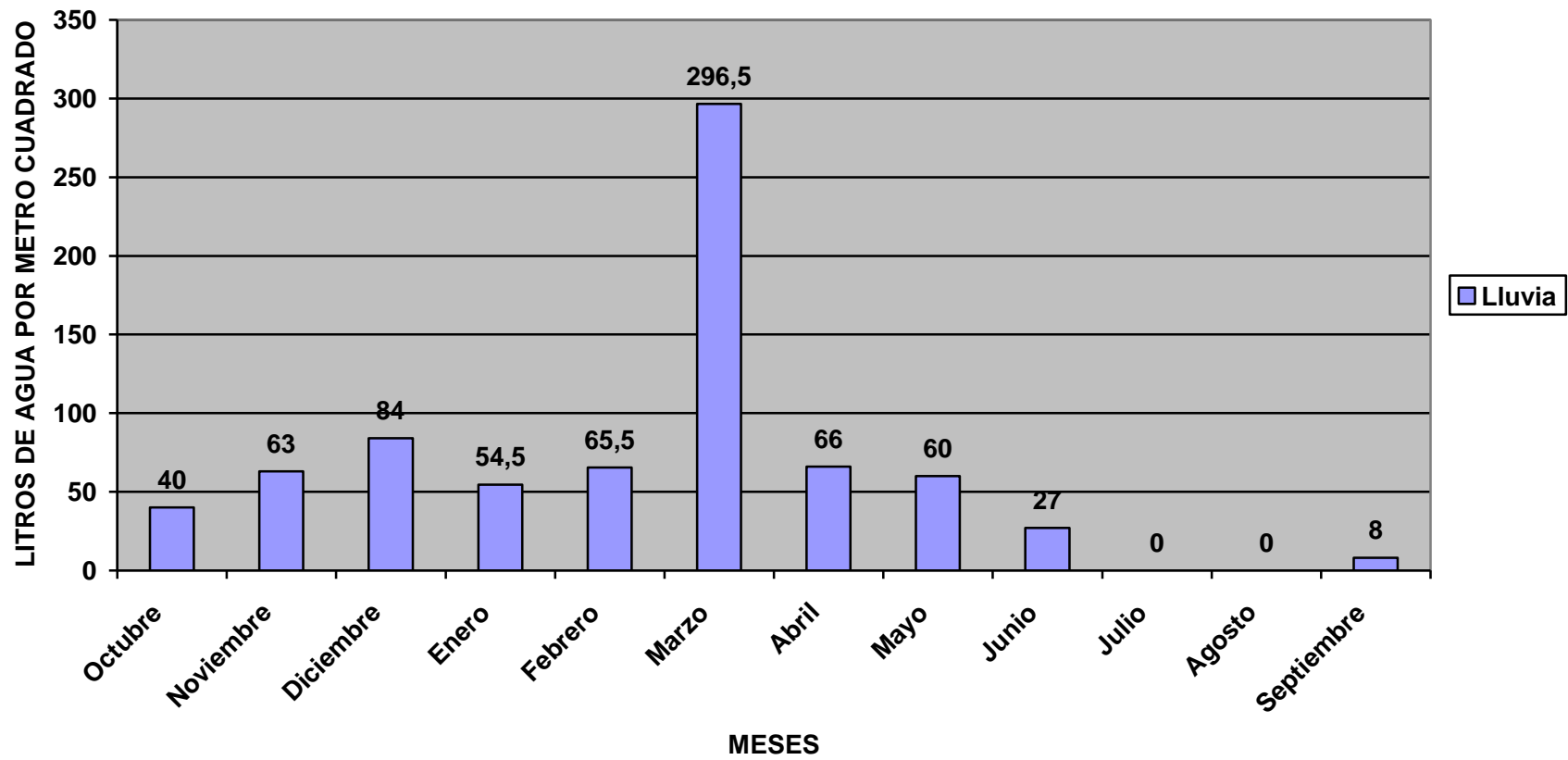
# AÑO AGRÍCOLA 2.017

382'5 litros



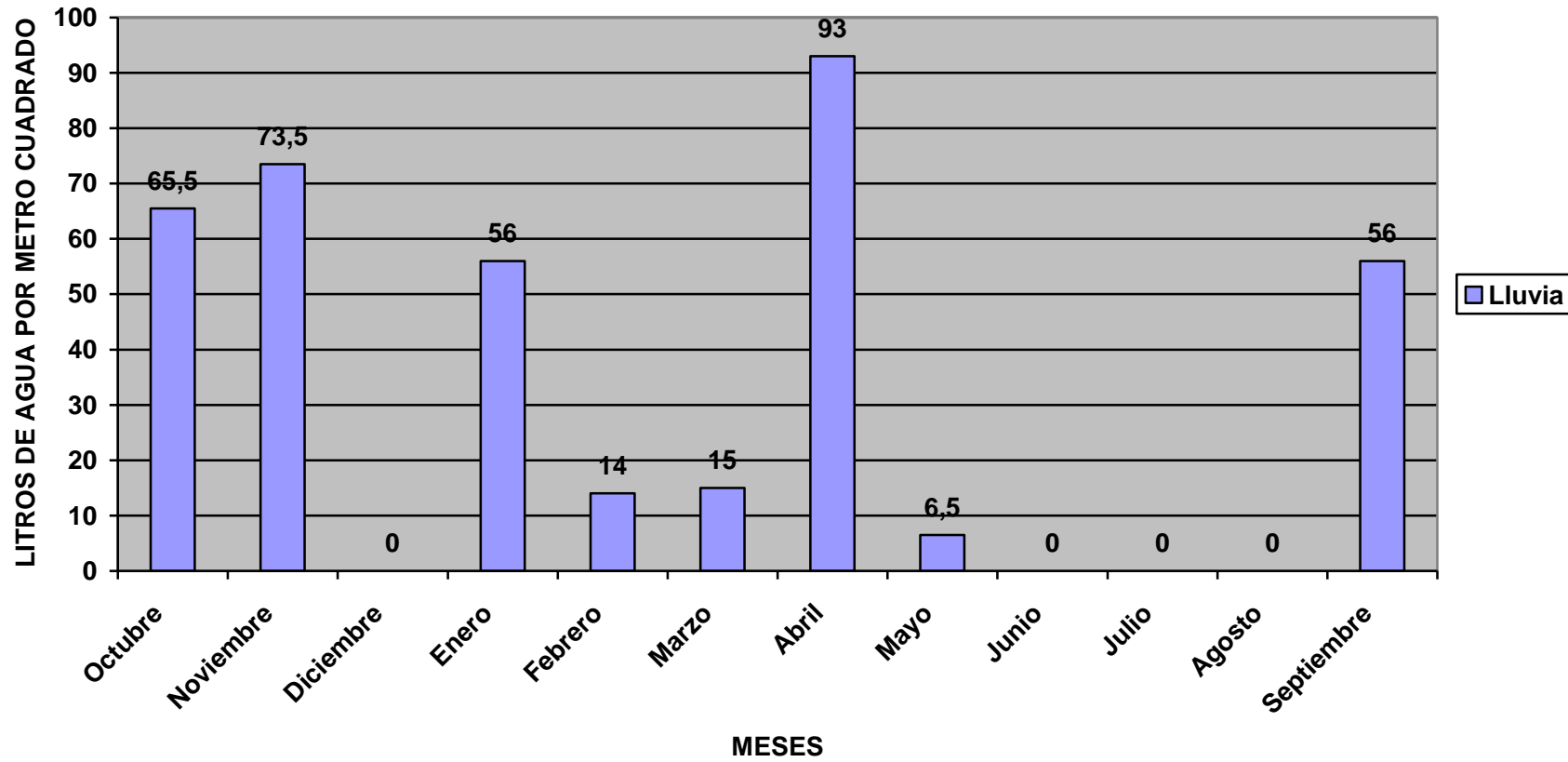
## AÑO AGRÍCOLA 2.018

764'5 litros



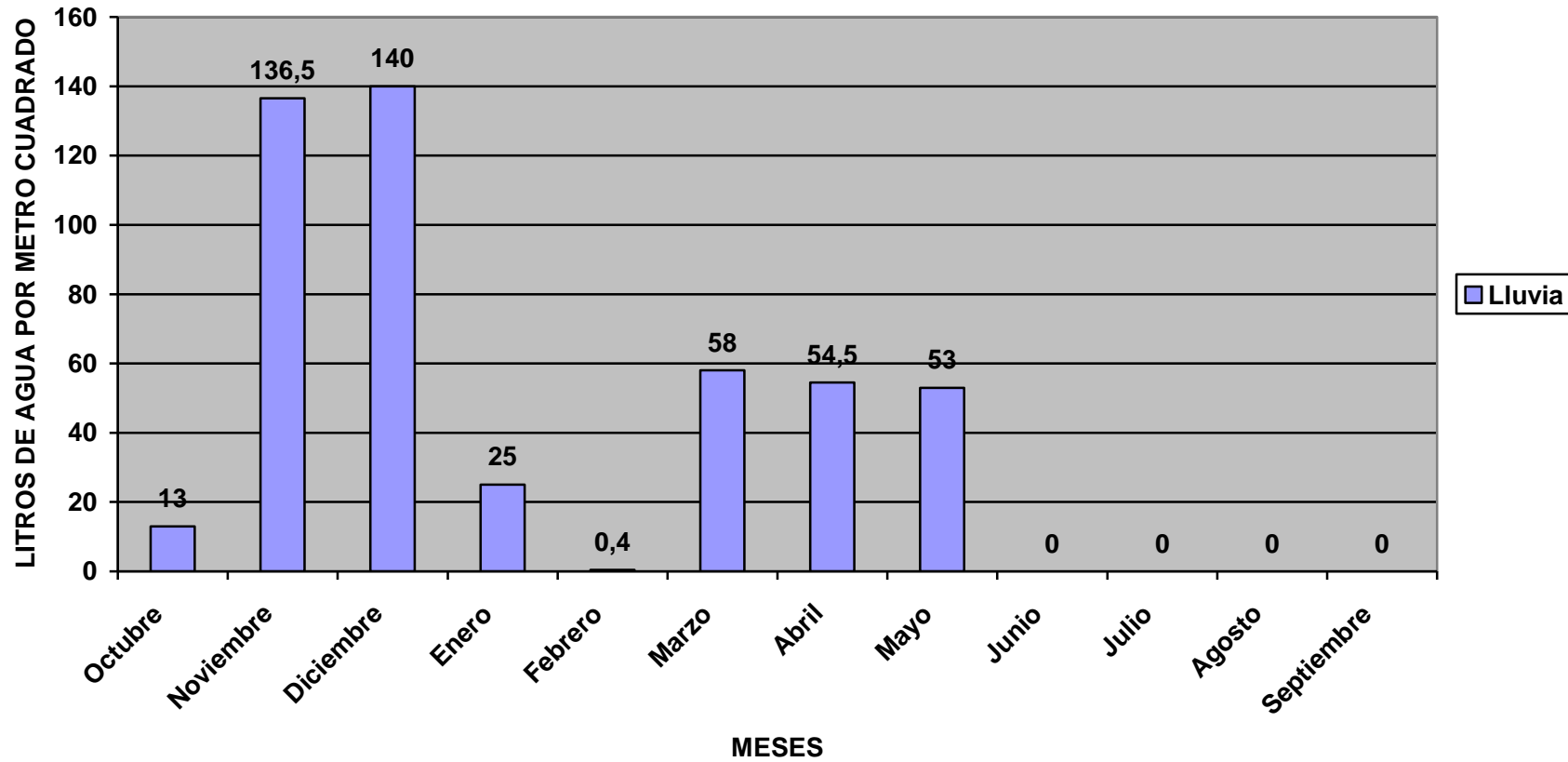
# AÑO AGRÍCOLA 2.019

379,5 litros



# AÑO AGRÍCOLA 2.020

480,4 litros



415,8 litros

## AÑO AGRÍCOLA 2.021

(Hasta el 15 de abril de 2021)

